



# GÖLZ®

## 2022



## Productoverview

[www.golzgroup.com](http://www.golzgroup.com)



# GÖLZ® – Continuous development

**GÖLZ®** has stood for quality, service and innovation for over 75 years. It is precisely the close and direct contact with our customers that enables us to work flexibly and performance-oriented on solutions for everyday construction work.

**GÖLZ®** sells quality – Made in Germany – in over 40 countries via its own sales and service points.

Professional construction machinery and the right diamond tool – everything from a single source. We are your partner in the concrete drilling and sawing industry.

**NEW** at **GÖLZ®**: BattPak5048





# Gölz Product groups



## Core Drills

Professional solution for simple and convenient operation in road and building construction



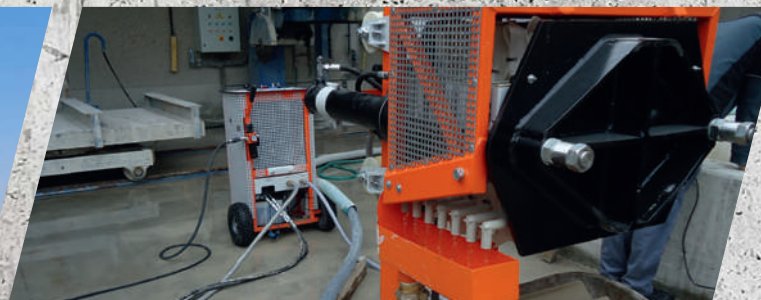
## Table Saws

High precision cutting of tiles, bricks and blocks



## Floor Saws

Compact machines for in- and outdoor application



## Slurry Fox

Economical solution of slurry recycling



## Surface Preparation

Small and compact machines for small grinding jobs



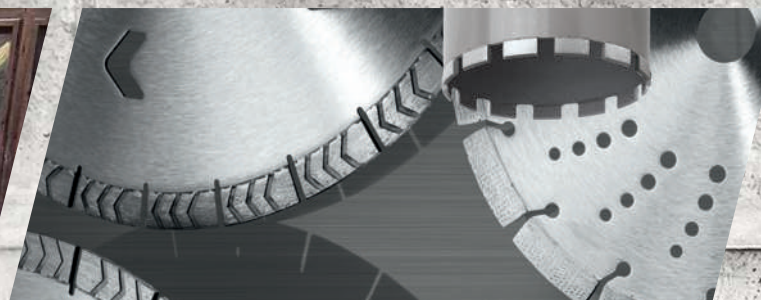
## Hand-Held Power Tools

Powerful machines for a wide range of tasks



## High Frequency Power Tools

Powerful electric tools for heavy users



## Diamond Tools

Excellent quality in the construction industry according to EN13236 and OSA standard



# Gölz Diamond Tools

## Diamond Tools for electric Angle Grinders and Hand-Held Power Cutters

Ø 115 - Ø 400 mm / Ø 4.5" - 15.7"



Ø (mm)	Available Bore (mm)	Ø (mm)	Available Bore (mm)	DS36	UG25	GX-U12	STARDUST	TS40GX
115/4.5"	22,23/0,9"	230/9"	22,23/0,9"	Diamond Cup Grinder Concrete general purpose	Turbo Blade – sintered Granite, Marble	X-Series - sintered - concrete, exposed aggregate concrete, bricks, general purpose. Precise diamond arrangement	Universal! High-Speed Cutting Blade for concrete, steel, stone, cast iron, PVC and wood	Concrete – laser-welded, Turbo fast cutting Blade for Cut off Saws with flush hole for Concrete, reinforced Concrete
125/5"	22,23/0,9"	300/12"	20,0/0,8", 25,4/1"					
150/6"	22,23/0,9"	350/14"	20,0/0,8", 25,4/1"					
180/7"	22,23/0,9"	400/16"	20,0/0,8", 25,4/1"					

## Diamond Blades for Tile-, Table- and Block Saws

Ø 180 - 400 mm / Ø 7" - 15.7"



Ø (mm)	Available Bore (mm)	RX1S	SLF30
180/7"	25,4 / 1"	X-Series - sintered Blade with Detenso Steelcore; Concrete, Exposed Aggregate Concrete, Bricks, general Purpose. Precise diamond arrangement	Premium Plus Quality - sintered High-Speed Cutting Blade for Ceramics, Fine Matter, Tiles, Marble
200/8"	25,4 / 1"		
250/10"	25,4 / 1"		
350/14"	25,4 / 1"		
400/16"	25,4 / 1"		

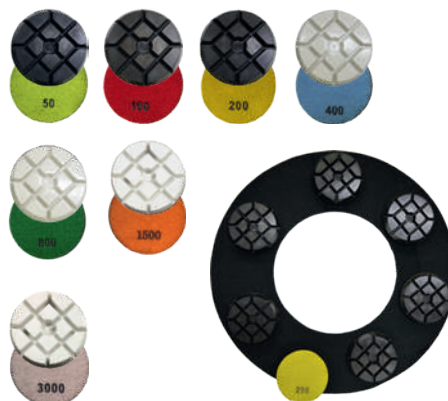
## Diamond Blades for electric Floor Saws and Wall Saws

Ø 600 - 1.200 mm / Ø 23.6" - 47.2"



Ø (mm)	Available Bore (mm)	WS1520GX	CS21	WS15GX
600/24"	60,0/25,4 + NL	X-Series - laser-welded Concrete, Reinforced Concrete. Precise diamond arrangement	Concrete, Reinforced Concrete – laser-welded	X-Series - laser-welded - Concrete, Reinforced Concrete. Precise diamond arrangement
650/26"	60,0/2,4"			
700/28"	60,0/25,4 + NL			
800/31"	60,0/25,4 + NL			
1000-1200	60,0/2,4"			

## Diamond Grinding Tools, Polishing Pads & Diamond Wire



GÖLZ Diamond grinding tools are equipped with Easy-Slide-System which allows easy and quick change of diamond tools without any working tools.

Polishing tool for processing of concrete flooring.

Standard and premium diamond wires for professional application in concrete, reinforced concrete, natural stone and steel.



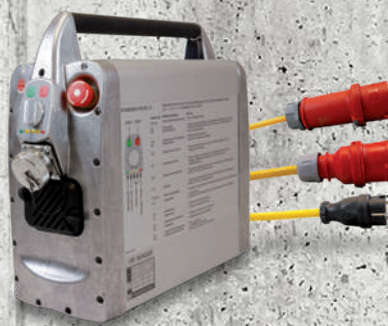
# Innovative High Frequency System

## Professional HF-Diamond Drilling and Sawing Equipment

### 1 control box for all devices:

- Beluga with Squatina Powercutters
- Beluga with Kogia ring saw
- Beluga with Espada chainsaw
- RX SL drilling motor

Can be used on 230 Volt and 400 Volt - 480 Volt networks



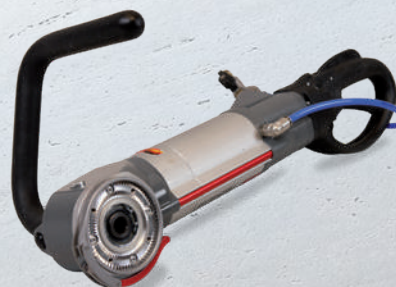
Powerbox

B102435

### 1 main drive unit (Beluga SXM) - 4 applications

- Powercutter Squatina 400 (Full blade guard)
- Powercutter Squatina 400 B (Flush cut blade guard)
- Ring saw Kogia 400
- Chainsaw Espada

With this system, the cost will be almost halved. Volume and weight are considerably lower, for an easier and space-saving transportation.



BELUGA

B201185



KOGIA

GB102459



ESPADA

B102255



SQUATINA

GB102248



SQUATINA B

GB102251X

**GÖLZ HF-RS4 - Aluminum Track System for High Frequency Power Tools**





# GöLZ Floor Saws

## Floor Saws / Push Saws

Powerful and heavy duty floor saws for cutting in concrete and asphalt.



### FS125

6,5 PS Honda gas engine  
Blade Ø 350 mm / Ø 14"  
Cutting depth 120 mm / 5"



### FS175

13 HP Honda gas engine  
Blade Ø 450 mm / Ø 18"  
Cutting depth 165 mm / 6.5"



### FS170

Gasoline, Diesel or Electric motor  
Blade Ø 500 mm / Ø 20"  
Cutting depth 190 mm / 7.5"

## Floor Saws / Self Propelled and electric



### FS190

13 HP Honda gas engine  
Blade Ø 500mm / Ø 20"  
Cutting depth 190 mm / 7.5"



### FS250B / D

25 HP Honda Gas Engine /  
20 HP Hatz Diesel Engine  
Blade Ø 800 mm / Ø 32"  
Cutting depth 310 mm / 12.2"

## Electro Floor Saws



### FS125E

3 kW-400 V 3-phase electric motor  
Blade Ø 350 mm / Ø 14"  
Cutting depth 120 mm / 5"



### FS23E

4 kW-400 V 3-phase electric motor  
Blade Ø 600 mm / Ø 24"  
Cutting depth 230 mm / 9"



### FS30E

7,5 kW-400 V 3-phase electric motor  
Blade Ø 800 mm / Ø 32"  
Cutting depth 320 mm / 13"



### FS40E

15 kW-400 V 3-phase electric motor  
Blade Ø 1000 mm / Ø 40"  
Cutting depth 400 mm / 16"



# Gölz Floor Saws - Overview

Specifications	FS125	FS175	FS170
Max Cutting depth	120 mm / 5"	165 mm / 6.5"	190 mm / 7.5"
Blade diameter	350 mm / 14"	450 mm / 18"	500 mm / 20"
Shaft size	25,4 mm / 1"	25,4 mm / 1"	25,4 mm / 1"
Water tank	25 Liter	25 Liter	25 Liter
Engine	Honda GX200, 6,5HP/4,8 kW	Honda GX390, 13HP/9,5kW KOHLER CH440, 14HP/10,5kW	Honda GX390, 13HP/9,5kW KOHLER CH440, 14HP/10,5kW Yanmar LA100, 10HP, 7,4kW
Shaft speed	2.730 min <sup>-1</sup>	2.300 min <sup>-1</sup>	2.300 min <sup>-1</sup>
Feed motion	Push	Push	Push
Cutting depth adjustment	Handwheel	Handwheel	Footpedal & Pneumatic Spring
Weight	77 kg	110-112 kg	120-130 kg

Specifications	FS190	FS250B	FS250D
Max Cutting depth	190 mm / 7.5"	310 mm / 12.2"	
Blade diameter	500 mm / 20"	800 mm / 32"	
Shaft size	25,4 mm / 1"	25,4 mm / 1"	
Water-connection	25 Liter	Integrated waterpump	
Engine	Honda GX390, 13HP/9,5kW	Honda GX690, 25HP/18,5kW	Hatz 2G40, 20HP/14,7kW
Shaft speed	2.100 min <sup>-1</sup>	1.600 min <sup>-1</sup>	1.450 min <sup>-1</sup>
Feed motion	Elektric	Electro-hydraulic drive	
Blade depth control	yes	Electro-hydraulic	
Cutting depth adjustment	Handwheel	Continuosly adjustable	
V-Belt tension	Manual	Self-adjusting belt tensioner	
Weight	137 kg	285 kg	346 kg

Specifications	FS125E	FS170E	FS23E	FS30E	FS40E
Max Cutting depth	120 mm / 5"	190 mm / 7.5"	230 mm / 9"	320 mm / 13"	400 mm / 16"
Blade diameter	350 mm / 14"	500 mm / 20"	600 mm / 24"	800 mm / 32"	1000 mm / 40"
Shaft size	25,4 mm / 1"	25,4 mm / 1"	25,4 mm / 1"	25,4 mm / 1"	25,4 mm / 1"
Motor	3-pase electric	3-pase electric	3-pase electric	3-pase electric	3-phase electric motor
Power	400 V; 3 kW; 50-60 Hz	400 V; 3 kW; 50-60 Hz	400V; 4kW; 50 Hz	400 V; 7,5/11 kW; 16/32 A	400 V; 15 kW; 32 A
Shaft speed	2.880 min <sup>-1</sup>	2.300 min <sup>-1</sup>	1.360 min <sup>-1</sup>	1.430 min <sup>-1</sup>	930 min <sup>-1</sup>
Feed motion	Push	Push	Push	Push	Electro-hydraulic drive
Cutting depth adjustment	Handwheel	Footpedal & Pneumatic Spring	Handwheel	Handwheel	Continuosly adjustable
V-Belt tension	Manual	Manual	Manual	Manual	Self-adjusting belt tensioner (half automatic)
Weight	85 kg	136 kg	108 kg	118/142 kg	418 kg



# GÖLZ Table Saws

## Tile Saws and Granite Saws

Powerful and robust bridge saws for the building construction and stone market.



**TS200**

Tile Saw,  
Cutting length 720 mm / 28"  
Blade Ø 200 mm / Ø 8"



**TS250**

Tile Saw,  
Cutting length 1.140 mm / 45"  
Blade Ø 250 mm / Ø 10"



**TS250A**

Tile Saw,  
Cutting length 1.300 mm / 51"  
Blade Ø 250 mm / Ø 10"

## Masonry Saws



**MS350C**

MS350C - Cutting length 560 mm / 22"  
Blade Ø 350 mm / Ø 14"



**MS400**

Cutting length 700 mm / 27.5"  
Blade Ø 400 mm / Ø 16"



**DS400**

Dry Cut Accessory

## Block Saws



**BS400E / P**

Electric / gas engine  
Cutting length 650 mm / 25.5"  
Blade Ø 400 mm / Ø 16"



**BS600**

230 V / 400 V  
Cutting length 400 mm / 600 mm / 16" / 24"  
Blade Ø 600 mm / Ø 24"



# Gölz Table Saws



## GS350

Granite Saw  
Cutting length 1.200 mm / 48"  
Blade Ø 350 mm / Ø 14"

## GS350A-120

Granite Saw  
Cutting length 1.200 mm / 48"  
Blade Ø 350 mm / Ø 14"



## GS350A-ML / GS350A-XL

Granite Saw  
Cutting length 1.500 mm or 2.200 mm / 59" - 87"  
Blade Ø 350 mm / Ø 14"



## MS400A

Cutting length 800 mm / 32"  
Blade Ø 400 mm / Ø 16"



## MS500A / MS600A / MS700A

Cutting length 650 mm / 800 mm / 26" / 32"  
Blade Ø 500 mm / Ø 600 mm / Ø 700 mm / Ø 20" / Ø 24" / Ø 28"



## CBS450

Powerful Circular Building Saw  
Mmotor with magnetic brake 400V - 16A  
Cutting height 150 mm / 6" - Blade Ø 450 mm



## BS650

Cutting length 500 mm / 20"  
Blade Ø 650 mm / Ø 25.5"



## BS1000

Cutting length 600 mm / 24"  
Blade Ø 1.000 mm / Ø 40"



## MB650

Cutting length 655 mm / 26"  
Cutting depth 650 mm / 26"



# Gölz Table Saws - Overview

Specifications	TS200	TS250 / TS250A	GS350 / GS350A	GS350A-ML	GS350A-XL
Motor	Electric, 230V, 50Hz, IP54			Electric, 230V / 400V, 50Hz, IP54	
Power	1,3 kW		2,2 kW	2,2 kW	2,2 kW
Max. cutting depth	40 mm / 1.6"	65 mm / 2.6"	110 mm / 4.3"	110 mm / 4.3"	110 mm / 4.3"
Max. blade size	200 mm / 8"	250 mm / 10"	350 mm / 4"	350 mm / 4"	350 mm / 4"
Arbor hole	25,4 mm / 1"	25,4 mm / 1"	25,4 mm / 1"	25,4 mm / 1"	25,4 mm / 1"
Cutting length	600 mm (720 mm)	1.140 mm / 1.300 mm	1.000 mm (1.200 mm)	1.300 mm (1.500 mm)	2.000 mm (2.200 mm)
Shaft speed	2.800 min <sup>-1</sup>	2.800 min <sup>-1</sup>	2.800 min <sup>-1</sup>	2.800 min <sup>-1</sup>	2.800 min <sup>-1</sup>
45° miter-cut	Built-In	Built-In	Built-In	Built-In	Built-In
Water pump	S2, 230 V, 50 Hz, 55 Watt			S2, 230 V, 50 Hz, 55 Watt	
Blade flange size ø	110 mm	110 mm	90 mm	90 mm	90 mm
Transport wheels	yes	yes	yes	yes	yes
Weight	57 kg	72 kg	95 kg / 113 kg	113 kg	135 kg
UK, US, Motors	110 V, 15 A		110 V, 20 A		

Specifications	MS350C	MS400 / MS400A	MS500A	MS600A	MS700A	CBS450
Motor	Electric, 230V, 50Hz, IP54			Electric, 230V / 400V, 50Hz, IP54		400V, 16A
Power	2,2 kW	2,2 kW	2,2 kW / 4 kW	2,2 kW / 4 kW	2,2 kW / 4 kW	P1: 4kW, P2: 3kW
Max. cutting depth	110 mm	137 mm	190 mm	230 mm	280 mm	150mm cutting height
Max. blade size	350 mm	400 mm	500 mm	600 mm	700 mm	450 mm
Arbor hole	25,4 mm	25,4 mm	30 mm	30 mm	30 mm	30 mm
Cutting length	560 mm	700 mm / 800 mm	580 mm (760 mm)	650 mm (800 mm)	650 mm (800 mm)	
Shaft speed	2.800 min <sup>-1</sup>	2.800 min <sup>-1</sup>	1.435 min <sup>-1</sup>	1.450 min <sup>-1</sup>	1.450 min <sup>-1</sup>	2.800 min <sup>-1</sup>
45° miter-cut	no, Miter-block optional	Built-In	no	no	no	no
Water pump	S2, 230 V, 50 Hz, 55 Watt					no
Blade flange size ø	90 mm	90 mm	95 mm	140 mm	140 mm	-
Transport wheels	yes	yes	ja	no	no	no
Weight	56 kg	66 kg / 79 kg	117 kg	115 kg	125 kg	112 kg
UK, US, Motor	110 V, 20 A available					

Specifications	BS400 E	BS400 P	BS600	BS650	BS1000	MB500 / 650
Motor	230 V / 400 V, 50 Hz, IP54	Honda GX160	230 V / 400 V, 50 Hz, IP54	3-phase, 400 V, 50 Hz, 16 A, IP 54	3-phase, 400 V, 50 Hz, 32 A, IP 54	230 V, 50 Hz
Power	2,2 kW	4,0 kW / 5,5 HP	2,2 kW	5,5 kW (7,5 PS)	7,5 kW (10 PS)	2,2 kW
Max. cutting depth	150 mm (double-sided cutting 280 mm)		235 mm	260 mm	420 mm	500 mm / 650 mm
Max. blade size	400 mm	400 mm	600 mm	650 mm	1.000 mm	
Arbor hole	25,4 mm	25,4 mm	25,4 mm	60 mm	60 mm	
Cutting length	650 mm	650 mm	400 mm - 600 mm	500 mm	600 mm	655 mm
Shaft speed	2.650 min <sup>-1</sup>	2.550 min <sup>-1</sup>	1.440 min <sup>-1</sup>	1.020 min <sup>-1</sup>	990 min <sup>-1</sup>	
45° miter-cut	No, Miter-block optional	No, Miter-block optional	no	no	no	yes
Water pump	S2, 230 V, 50 Hz, 55 Watt	efficient mechanical water pump	S2, 230 V, 50 Hz, 55 Watt	electric	electric	
Blade flange size ø	90 mm	90 mm	130 mm	120 mm	160 mm	
Weight	90 kg	93 kg	95 kg	230 kg	280 kg	174 kg / 180 kg



## Grinding Machines



### SM250

Motor: 230 V, 16A  
Grinding diameter: 250 mm / 10"



### SM280

Motor: 230 V, 16A  
Grinding diameter: 280 mm / 11"



### SM400S

Motor: 400 V, 16A  
Grinding diameter: 400 mm / 16"

## Slurry Fox

Portable slurry solutions for concrete slurry resulting in the separation of solids and water. Complete solutions for the concrete cutting, floor grinding, precast and ready-mix industries.



### SFP3L

The compact and mobile solution for your day to day operation



### SFP8L

Mobile and also stationary Slurry filter press for continuous operation on the jobsite or on the yard.



### SFP647

For industrial use on the construction site or in concrete and stone factories

## Hand-Held Power Tools



### HS400S

Elektrischer Nass-/Trocken-Trennschleifer mit Vollblattschutz

### HS400F

Elektrischer Nass-/Trocken-Trennschleifer mit Bündig-Blattschutz für den Randnahschnitt



### SF150

Powerful Wall Chaser - 150 mm / 6" Designed for your safety and comfort



### SM125

Concrete grinder. Robust and powerful - perfect for your grinding and polishing requirements for small jobs. Easy polishing - grinding - cleaning



# Gölz Core Drills

## Core Drilling Machines - aluminium

Core drilling machines for different applications in building construction.



**SD160**

The compact, lightweight and easy solution for all installation and fastening holes up to  $\varnothing$  162 mm /  $\varnothing$  6"



**RD160**

Reliable core drilling machine for all installation holes up to  $\varnothing$  160 mm /  $\varnothing$  6"



**SD250**

Lightweight and solid. For all installation holes up to  $\varnothing$  250 mm /  $\varnothing$  10"



**RD250**

Lightweight and professional core drilling machine for holes up to  $\varnothing$  250 mm /  $\varnothing$  10"

## Pneumatic and gas powered Core Drilling Machines

Core drilling machines for road works, sewage pipes and building construction.



**KB150 AIR**

Multipurpose core drilling machine for the sewer, road and building industry. Max.  $\varnothing$  300 mm / 12"



**KB150 GAS**

Multipurpose core drilling machine for the sewer, road and building industry. Max.  $\varnothing$  300 mm / 12"

## Hand Held Core Drilling Machines Drill Stands

Hand Drills for dry drilling in soft bricks and wet drilling in concrete, reinforced concrete and stone.



**SD160**



**SD250**



**FBS16**

Powerful Core Drilling Machine with soft impact



**FB10**

Functional Dry Drilling Machine



**FBS10**

Strong Dry Drilling Machine with soft impact



## Core Drilling Machines - robust stainless steel

Adaptable with numerous electric, gasoline, pneumatic and hydraulic motors.



### KB130

The established and proven Core Drill Set for the construction site up to  $\varnothing$  250 mm /  $\varnothing$  10"



### KB400

Heavy User core drilling machine with combined slider/roller carriage. For holes up to  $\varnothing$  400 mm /  $\varnothing$  16"



### KB500

Heavy User core drilling machine with combined slider/roller carriage. For holes up to  $\varnothing$  600 mm /  $\varnothing$  24"

## Core Drilling Machines for road works and sewage pipes

Powered by STIHL 2-stroke motors are the most flexible solution in the construction industry.



### KB200 GAS

Specially designed for taking core samples from roads or installing barrier posts and different kind of pillars. Max.  $\varnothing$  200 mm / 8"



### KB350 GAS

The original and most modern solution in pipe and sewage drilling for house connections and surface water with GÖLZ KB 350 and STIHL-2-stroke-engine. Max.  $\varnothing$  350 mm / 14"

- Available with
- Gas Motor
  - Air Motor
  - Electric
  - Hydraulic

For several applications as fixings, installations and openings for gas, water, heating and air supplies.



### FB23S / FB23P / FB25P

2-Speed Heavy Duty Hand Held Core Drill. Compact Core Drill for anchor and installation holes



### FB33S / FB33P

3-Speed Heavy Duty Hand Held Core Drill. Powerful core drill with full metal housing for hand held or drill stand operation



### FB33PNT / FB33SNT

3-Speed Heavy Duty Hand Held Core Drill. Powerful core drill with full metal housing for dry and wet operation



# Gölz Diamond Tools



Slider Drill Bit Quick Release



Centerdisc  
„Guido“



Dust Rotor



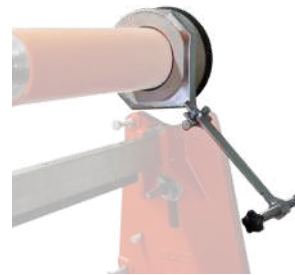
GS70K Wet Vac



WB50E - Battery powered



WB 10 L  
Watertank



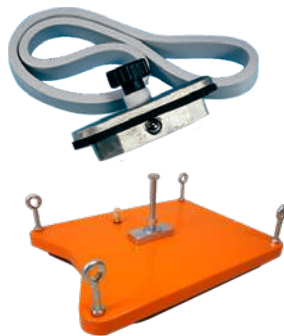
Water & Slurry Collectors



APT Dust & Water  
Collector



VP25 Vacuum Pump



Vacuum Equipment

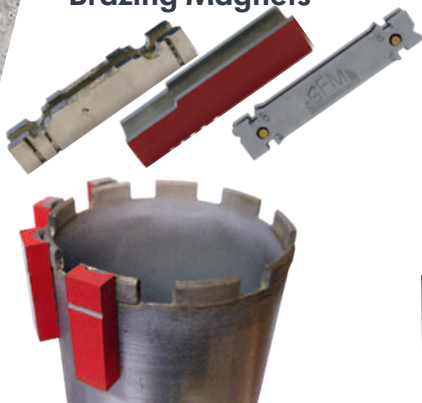


Fastening Kit



Core Lifter

Brazing Magnets



Motor Plates



Adaptors & Extensions



Toolfree Drillbit  
Connection PQ6

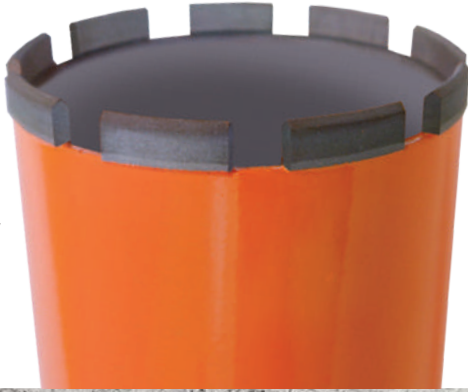




# Gölz Diamond Tools

## Drill Bits

- Ø 25 mm – 1.200 mm
- Connections: 1 ¼" UNC, R ½", M41, 3-hole Flange, 4-hole Flange
- several length



## Crown Bits

- Ø 10 mm – 50 mm
- Connection: R ½"
- several length



## Segments

- for Drill bits with sizes from Ø 25 mm up to 1.200 mm



**GALAXIS**  
TECHNOLOGY



## Dry drilling Concrete/Brickwork



### KT45 / KT55

Laserwelded Premium Dry Drill Bit  
Connection 1 ¼", for Brickwork, Limestone,  
Pumice, Bricks, Poroton, abrasive Materials

## For canal construction



### KN57

Drill Bit with 3-Hole-Flange  
for Concrete, Reinforced Concrete,  
Brickwork

## For tiler



### DTD14

Galvanized Tile Drills for Angle Grinders that allow  
smooth coring through hardest Porcelain, Granite and  
Stone Plates, Ceramics, Tiles and Marble



Sales displays



Diamond Tools packages



**Great Britain**  
Gölz (UK) Ltd.  
Unit A5  
Springhead, Enterprise Park  
Northfleet  
Kent DA 11 8HB  
Tel +44 1 474 321 679  
Fax +44 1 474 321 477  
E-Mail info@goelz.co.uk

**Benelux**  
Gölz Benelux N.V. Belgien  
Eupener Straße 61  
B-4731 Raeren-Eynatten  
Tel +32 (0) 87 55 23 49  
Fax +32 (0) 13 78 33 28  
E-Mail benelux@goelz.de

**Germany**  
Gölz GmbH  
Dommersbach 51  
53940 Hellenthal  
Tel +49 (0) 2482 - 120  
Fax +49 (0) 2482 - 12 222  
E-Mail info@goelz.de

**France**  
Gölz S.A.S.  
1, rue de la Mairie  
F-67370 Bersstett  
Tel +33 (0) 3 88 59 43 00  
Fax +33 (0) 3 88 59 47 77  
E-Mail info@goelz.fr

**Austria**  
Gölz Ges.m.b.H.  
Samstraße 52  
A-5020 Salzburg  
Tel +43 (0) 662 - 43 81 75  
Fax +43 (0) 662 - 43 07 34  
E-Mail info@goelz.at

**USA**  
Golz LLC  
E-Mail info@golzusa.com

**China**  
Gölz (Hàng Zhou) Intelligent Technology Co.,LTD  
No. 180, Hongxing Road  
Xiaoshan Economic & Technology  
Development Zone  
Hangzhou, Zhejiang  
Tel +86 571 8352 7672  
Fax +86 571 8269 2269  
E-Mail info@golzgroup.com

Your GÖLZ dealer

